

# The Link

News and information covering  
Tadmarton and Swalcliffe

June 2019



Tadmarton Village Website

[www.tadmartonvillage.co.uk](http://www.tadmartonvillage.co.uk)

Swalcliffe Village Website

[www.swalcliffevillage.co.uk](http://www.swalcliffevillage.co.uk)



### **Team Weston Update**

After some steady winter training, my first race of the season was a 70.3 distance race, (half ironman) in Spain called Challenge Salou on the 7<sup>th</sup> April. Consisting of a 1.9km swim, 90km bike and 21km run, it was one of the longest races I had attempted. I had specifically trained for these distances so went into the race feeling hopeful for a good position.

My initial concern was racing in the heat, I need not have worried as it was a little chilly! Unseasonably bad weather brought choppy sea conditions, the swim was very nearly cancelled as the kayaks, used for safety, could not even get through the waves. This actually was an advantage for me, being a strong swimmer, I was one of the quickest in the water. It was my first ever sea swim and I could barely see which way to go due to the height of the waves, a few people were rescued as it was too much for them.

Then it was out onto the bike, high winds made for a slightly harder ride, but I kept it steady, coming off the bike feeling good for the 21km run.

Some of my fellow competitors had made the mistake of pushing it too hard on the bike and so when it came to the run, they ran out of energy and could not finish. Longer distance races are not just about speed but also endurance, nutrition and forward planning. Typically, the sun came out whilst on the run, so it got a little hot and I got some weird tan lines!

Really happy to win my 18 – 24 age group in an overall time of 5 hours 22 minutes. I was starving hungry postrace, but luckily there was a McDonalds just across the road from the finishing line. That was the best Big Mac ever!

Back to slightly shorter distance races now, starting in May.

## Editorial and Advertising

### Editor

Mery Wolke  
Honeystone Cottage  
Lower Tadmarton, nr Banbury  
OX15 5SS  
01295-780451

### Swalcliffe contributions:

Charlotte Watkins  
Holly Cottage, Bakers Lane,  
Swalcliffe.  
Tel: 01295 788045  
chirpie34@hotmail.com

### Advertising Manager and Treasurer

Julie Lingwood  
Willows End, Lower Tadmarton,  
Banbury OX15 5SS  
Tel: 01295 788813

### Advertising Rates

The Link is delivered to 370  
homes in (Lower) Tadmarton,  
Swalcliffe and The Highlands  
The Price for 1 year (10 issues)

**IMPORTANT!**  
**Last copy date for the**  
**July / Aug issue is the**  
**17th of June**

**Articles received LATE will**  
**NOT be included in the next**

Full page 125mm x 185mm £ 110  
½ page 125mm x 90mm £ 66  
¼ page 60mm x 90mm £ 33  
⅛ page 60mm x 40mm £ 18

*Price for a single issue on application.*

### Tadmarton Parish Councillors

Steve Kingsford,	<i>Chairperson</i> 780716
Jane Fitzpatrick	780451
Tim Turner	<i>Vice Chair</i> 780764
Kevin Tomblin	788342
Paul Higley	788447
Christine Coles, <i>Parish Clerk</i>	276229

### Swalcliffe Parish Councillors

Ben Benson	07970838304
Ryan Smith	788537
Victoria Taylor	780206
Neil Urquhart <i>Chairperson</i>	07867 695550
Christine Coles, <i>Parish Clerk</i>	276229
Ken Hodkinson	07535 701632
Lee McCallum	07779 400421

### The Link is Sponsored by

Christopher Dean & Co  
Horticultural Society  
Swalcliffe Church  
Swalcliffe Parish Council

Tadmarton Village Hall  
Tadmarton Church  
Tadmarton Parish Council

## Letters and Emails

Noted form the Editor:

Page 1 shows the beautiful coloured Bunnies from our April Issue colouring competition  
Left is by Charlie Campbell Age 7 From Tadmarton

Right is by Molly Edwards Age 5 From Swalcliffe.

Charlie has received his Egg but unfortunately we have not yet been able to get our hands on the contact details for Molly. So if you are Molly's parent or know her please give me a shout so that I can drop off the egg she so clearly deserves.

Remember Rosie Weston , a promising triathlete who lives in Lower Taddy when not at university. She combines training, university and work.

Now the Triathlon season is back in full swing you read her first race report of the year on Page 2. We wish her much luck for the season.

An abbreviated version of the Village Hall Annual accounts can be found on Page 22  
Full accounts are available on request. Please contact me on 01295780451

We have been adopted by a Lovely Ginger and White Kitten named Cory. He has shown a real interest in the laptop, So should you find any characters out of place , missing letters or "strange" errors; Cory takes full responsibility .





## NEIL MEGSON

### Electrical Services

Tel: .01295 263665  
Mobile 07887 653842

Email

[meggers1@btinternet.com](mailto:meggers1@btinternet.com)

Light-Sockets-Extensions  
Re-Wires-New Builds.

For All of Your  
Domestic Electrical  
Requirements.

FREE ESTIMATES –

## Pilates in Sibford

Madeleine Wilson M.Sc.,

Master Mat & Studio Teacher Offers:

- **Bespoke One to One and Duet Studio Sessions,** Training on specialised ***Pilates Equipment*;** Reformers, Chairs, Barrels and Cadillac.
- **Small group Matwork classes,** incorporating small equipment

For all levels from **beginners** to **advanced**

T: 01295 780279

Mobile: 07905 953300

## Trinity Oak

Tree felling & landscape  
gardening services

01295 730650 OR Mobile 07497 538 180 (anytime)  
Please ask for Julian

### Working 7 days a week

- ALL TREES FELLED, TRIMMED, SHAPED & PRUNED
  - 24 HOUR EMERGENCY CALL OUT
- HEDGES REDUCED, REMOVED & LAYED
  - LARGE TREES TOPPED & FELLED
- STUMPS REMOVED & DESTROYED
  - FIRE LOGS SIZED TO ORDER
  - TREE SURVEYING
  - NEW FENCES ERECTED
- ORNAMENTAL BARK WORK UNDERTAKEN
  - PATIO'S, PATHS & STEPS LAYED
  - DECKING
  - PONDS & LAKES
- RUBBISH REMOVED OR WOOD CUT FOR YOUR OWN USE

Free Quotations without obligations  
Fully insured



## TADMARTON VILLAGE HALL

Well equipped kitchen, tables and chairs available.

Letting rates from £8.00 per hour.  
£5.00 rate for villagers !

Special all day booking rates.  
Ask me about the stunning interior lining to make that party even more special.

**Full Audio Visual Equipment now available,**  
Ideal for presentations, parties, Private Gaming Nights etc.

Thinking of throwing a party  
but don't have the space;  
Consider your local village hall



## SWALCLIFFE VILLAGE HALL

Your village hall is available for meetings,  
fund-raising events, functions, and children's parties.

£10 for the first hour, £5 per hour thereafter

Well-equipped kitchen. Audio-visual equipment.

Tables & chairs available for hire.

Enquiries: Tracy 780710  
Or [tracylean@gmail.com](mailto:tracylean@gmail.com)



David lovesey Rural Services

Total Grass Care

Moss & Weed Control

Mowing, Scarifying, etc.

Also Mower Servicing at Sensible Rates

Tel: 01295-788298

07984 879891

Email: davidlovesey@gmail.com



Josh Lovesey

Trainee Car Mechanic

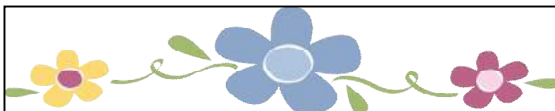
Offering Servicing &

Basic maintenance

(No diagnostics)

Tel 07817 801485

Or David 07984879891



## Quarry Nurseries

**Philip Gilbert**

Quarry Nurseries, Nr Banbury, Oxfordshire OX15 6DF  
Tel Home: 01295 670367 Nursery: 07903 655 267

### OPENING HOURS 2019

#### SPRING

20th April to 22nd June - OPEN 7 days a week  
10am-5pm

#### SUMMER

26th June to 6th July - Weds, Thurs, Fri, Sat - 10am -5pm

#### AUTUMN

4th Sept to 27th Oct - Weds, Thurs, Fri, Sat, Sun

## HOW TO FIND US

After leaving Wroxton, on the A422, Banbury to Stratford road - Drive past the turning to Alkerton Shennington Recycle Centre on your left and take the next turning on the right, sign-posted Hornton and Horley. We are on the left about half a mile on Quarry Road

## **TADMARTON VILLAGE HALL NEWSLETTER**

### **News from the Village Hall**

**ONLINE DIARY and BOOKING SYSTEM GOES LIVE!!** – Want to see what's going on in the village hall or make a booking to hire our venue, then visit:  
[www.tadmartonvillage.co.uk/village-hall](http://www.tadmartonvillage.co.uk/village-hall)

You can also book by contacting Helen Yeomans on 01295 780426  
 email: [helen@barncroftbook-keeping.co.uk](mailto:helen@barncroftbook-keeping.co.uk)

### **Dates for your Diary:**

**TADMARTON FILM CLUB** – Film showings on last Saturday of the month, film starts at 7.30pm, and following Wednesday matinee showing at 1.30pm  
 Come and join us for a spectacular evening's entertainment at your village hall!!!  
 Membership fee is £15 for 12 months – that's £1.25 a film – what's not to love!!

**Our COFFEE MORNINGS and MAGAZINE SWAP CLUB** now have a regular slot in the village hall diary of the 2<sup>nd</sup> Saturday of the month – 10am-11.30am

All welcome to join us for a chat and a cuppa, plus bring along your old magazines and exchange them for something different.... Future dates are:

- 8<sup>th</sup> June
- 13<sup>th</sup> July
- 14<sup>th</sup> September
- 12<sup>th</sup> October

**We also now offer a local Food Bank Collection and so bring along your donations and enjoy a cuppa and a natter too.....**

**Computer & iPad Club** – 2<sup>nd</sup> and 4<sup>th</sup> Tuesday morning of every month – 11am–1pm. Contact Pat Pierce on 722643 for further information.

If you would like to get involved, we would love to hear from you.....

Please contact:

Alex Silverman                      alex@alexsilverman.co.uk  
 Helen Yeomans                      01295 780426



**TADMARTON VILLAGE**

**FIND US ON FACEBOOK**

**Or visit [www.tadmartonvillage.co.uk](http://www.tadmartonvillage.co.uk)**



# Serenity at Sibford

Gautherns Barn (nr Temple Mill)

01295 788463    07891 220275

**Celebrating 10 Years of Relaxation and Pampering!**

Specialising in Guinot and Environ Facials & Skincare

OPI Manicures and Pedicures, Lava Shell and Hot Stone Deep Tissue Massage

All Types of Blemish Removal - Age Spots, Milia, Skin Tags, Warts etc

Shellac, Waxing, Eyelash Tinting, Jane Iredale Make-Up,

Reflexology, Indian Head Massage

Fully Equipped Pilates Studio

Open Monday to Saturday with Jo and Vanessa  
(20+ years experience)

Free Private Parking

email: [jo@serenityatsibford.co.uk](mailto:jo@serenityatsibford.co.uk)

[www.serenityatsibford.co.uk](http://www.serenityatsibford.co.uk)

[www.pilatesinsibford.co.uk](http://www.pilatesinsibford.co.uk)



## **Neighbourhood Watch Scheme**

Over the last few months there have been a number of incidences, in and around the surrounding area, where homes have been burgled and garages / out buildings / sheds have been broken into.

Not wishing to spread fear and undue worry, this now appears to be part and parcel of the society we live in today and therefore it is important, as a village, we look after and protect each other.

An Neighbourhood Watch Scheme helps to reduce such incidences by providing a visible and active deterrent.

The main aims and objectives of such a scheme are:

- To improve community safety generally including, e.g., fire safety
- To prevent crime by improving security, increasing vigilance, creating and maintaining a caring community and reducing opportunities for crime by increasing crime prevention awareness.
- To assist the police in detecting crime by promoting effective communication and the prompt reporting of suspicious and criminal activity.
- To reduce undue fear of crime by providing accurate information about risks and by promoting a sense of security and community spirit, particularly amongst the more vulnerable members of the community.
- To improve police/community liaison by providing effective communications through Neighbourhood Watch messaging systems which warn Coordinators of local crime trends which they can disseminate to their scheme members, and by members informing the police of incidents when they occur.

Schemes can cover the whole village or discreet areas moulded very much to the requirements of local residents.

If there is a desire within the Village to implement such a scheme, please contact any Parish Councillor.

If there is sufficient interest, the intention would be for a group of volunteers to set up and run the scheme liaising with other local Neighbourhood Watch Schemes.

Many thanks,

Tadmarton Parish Council

# The Croft Beauty Studio

**Skincare, massage and beauty  
treatments in Epwell**

- facials using Neal's Yard Organic Remedies
- Swedish and deep tissue massage
- manicure / pedicure / Gelish gel polish
- lash & brow tinting / shaping
- waxing including Brazilian and Hollywood with hot wax
- spray tan

For Further information contact Carol 07841 657764

## N.D. SMITH *Carpenter & Joiner*

*Specializing in quality joinery work  
Windows, doors, stairs, roofs,  
Loft conversions,  
Conservatories, etc.*

*All aspects of building work  
undertaken, from small  
extensions to  
new house building and  
Barn conversions.*

*All work carried out by  
qualified tradesmen*

**TEL: 01295 780970**

*nicksmith.tadmarton@btinternet.com*

*For Free estimates and advice*

# NOAHSARK Painting Company

**SIMPLY BEAUTIFUL DECORATION**



Exterior decoration



Bespoke murals

**Every form of interior &  
exterior painting &  
decorating**

**(01295) 811026**

[www.noahsarkpainting.co.uk](http://www.noahsarkpainting.co.uk)

**Do you  
HATE  
washing  
these?  
then**

**HIRE**



**White China & Cutlery  
and return it unwashed!  
Enjoy your festivities  
with**

*Gill  
Judd*

*Cakes of Distinction*

**Tel: 01295 780243**

Email: [info@gilljuddcakes.co.uk](mailto:info@gilljuddcakes.co.uk)

Website: [www.gilljuddcakes.co.uk](http://www.gilljuddcakes.co.uk)

**NOW... ALSO VINTAGE TEA  
PARTY CHINA FOR HIRE**



## **St. Nicholas, Tadmarton Church Services June 2019-July 2019**

### **June 2019**

#### **Sunday 2<sup>nd</sup>**

**10.00am Benefice Eucharist (EH) Sibford**

Sunday 9<sup>th</sup>

11.00am Holy Communion (JT)

Sunday 16<sup>th</sup>

11.00am Holy Communion (EH)

Sunday 23<sup>rd</sup>

11.00am Village Service (JT)

Sunday 30<sup>th</sup>

11.00am Holy Communion (RH)

### **July 2019**

#### **Sunday 7<sup>th</sup>**

**10.00am Benefice Eucharist (RH) Epwell**

Sunday 14<sup>th</sup>

11.00am Holy Communion (EH)

Sunday 21<sup>st</sup>

11.00am Holy Communion (JT)

**\*\* Every Tuesday 10.00 am** Holy Communion (BCP) (RH)

**June 4<sup>th</sup>, 11<sup>th</sup>, 18<sup>th</sup>, 25<sup>th</sup>, July 2<sup>nd</sup>, 9<sup>th</sup>, and 16th**

Followed by: 10.30 am Tea/Coffee in "The Lampet Arms"

Revd Ronald Hawkes (RH) Tel: 01295 780555

Email: [revronald@wykehambenefice.org.uk](mailto:revronald@wykehambenefice.org.uk)

The Reverend John Tattersall (JT)

The Reverend Elizabeth Hawkes (EH)

The Reverend Dr David Pym

Revd Canon Glynn Evans (GE)

The Ven. Keith Smalldon (KS)

**Do you have difficult or  
confusing emotions and  
want to share them with  
a qualified counsellor?**



**Do you feel you have  
more to offer and want to  
develop personally?**

**The Banbury Therapy Centre offers safe  
affordable counselling and  
psychotherapy for a variety of issues  
and life situations.**

**For your FREE ASSESSMENT phone  
01295 231320 to see how we can help,  
or look on our website:**

**[www.banburytherapycentre.com](http://www.banburytherapycentre.com)**



## **St.Nicholas Church, Tadmarton June 2019**

- 1. The Summer Cream Tea** will take place on Sunday **July 28<sup>th</sup> at 2.30pm** at The Old Glebe by kind permission of Dr. and Mrs. R.Smith.
- 2. The Harvest Festival Service** will be held in the Church on Sunday 29th September at 6.00PM
- 3. The Pudding Club** will be held on Saturday 9<sup>th</sup> November.
- 4. The Kitchen Refurbishment** has now been progressed by Mr. J. Whitney with the Assistant Church Buildings Officer DAC, Diocese of Oxford on 15<sup>th</sup> May and progress has been made. It is hoped that work may start in the not too distant future.
- 5. All services and times** are detailed in The Link and on the Church Notice Board located near the Church entry door. Everyone is welcome to our services and services are usually followed by cake or biscuits and a beverage.

J.H.W. 17.05.2019





## Cottage to Let

Sympathetically renovated cottage in the quiet village location of Lower Tadmarton. Available for short breaks, short term or medium term lets.  
(Special rates for 6-12 weeks let).

1 double bedrooms, 1 Twin bedroom, Living room has corner settee that converts to a double bed. Upstairs and Downstairs Wet-rooms, Spacious kitchen, Utility room, Wheelchair friendly, Dogs welcome, Cosy Log burner. Temperature controlled electric heating, throughout. Private gardens. Off road parking for 1-2 vehicles,

For more information please contact Jane or Mery on:  
Day 01295252551 Eve 01295780451 Mob 07711794133



**MITSUBISHI  
MOTORS**

Drive your Ambition

# **The Firs Garage**

**www.firs-garage.com**

**Family business established 1960**

**Tel: 01608 737349 / 737641**

**Hook Norton, OX15 5DD**

**ECLIPSE CROSS**



**New Mitsubishi Eclipse Cross  
petrol SUV, designed to inspire**

Extensive range of new  
and used economical cars,  
hybrids & 4x4's

Part exchange welcome

Service

MOT Parts

Bodyshop

Fuel Shop

**ALL MAKES  
SERVICING  
COMPETITIVE PRICES**



Services in Swalcliffe Church in June 2019 are as follows:

Sunday 9<sup>th</sup> June – 9.30am Holy Communion  
(The Rev'd Ronald Hawkes)

Sunday 16<sup>th</sup> June – 9.30am Morning Worship  
(The Rev'd Elisabeth Hawkes)

Sunday 23<sup>rd</sup> June – 9.30am Holy Communion  
(The Rev'd John Tattersall)

Sunday 30<sup>th</sup> June – 4.30pm Family and Pet Service – all  
pets welcome for a blessing -  
(The Rev'd Ronald Hawkes)

There will be Benefice Eucharists at Sibford at 10.00am  
on Sunday 2<sup>nd</sup> June (The Rev'd Elisabeth Hawkes) and  
at 10.00am on Sunday 7<sup>th</sup> July at Epwell (The Rev'd  
Ronald Hawkes).



#### 6 week course of puppy training classes

- Teaching all the basic life skills
- Providing essential socialisation
- Giving you the very best foundation for life with a new puppy
- Fun, informative, welcoming and family friendly classes

**Classes held at Shutford Village Hall,  
7pm Thursdays**

[www.brighteyesdogtraining.co.uk](http://www.brighteyesdogtraining.co.uk)  
Call Rachel on 07525 096584

# TADDY



## DOG GROOMING



**TADMARTON  
BANBURY  
OX15 5SJ**

**t: 07966 269 078**

**e: [lisa.salmontdg@aol.com](mailto:lisa.salmontdg@aol.com)**



**Barking Mad**

Happy Dog, Happy Holiday.  
Happy You.

- Are you a dog lover?
- Do you have lots of free time?
- Looking for companionship & cuddles?

We're looking for lovely volunteer hosts to home board friendly dogs whilst their owners are away.

***We provide full support, cover all costs and dogs come with everything they need!***

**For more information visit:**

<https://www.barkingmad.uk.com/local/oxfordshire/banbury/>

**For an informal chat call Andrea or David on  
01295 477295**

**Pistols at Dawn**  
**Tadmarton v Swalcliffe Inter Village Clay Shoot**



**Your village needs you**

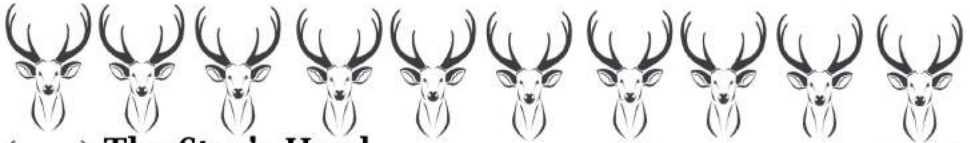
This annual event for a change will be held on Saturday 22 June 2019 at the Oxfordshire Shooting Ground, Enstone. Meet at 10.00am to start shooting at 10.30am

You do not need a great deal of experience it is for fun.

Only the top 5 guns from each side will count so you cannot let the side down. You have to live in either village for your scores to count but anyone can shoot for fun.

Please contact the following if you can shoot  
(Taddy) Chris Dean 788104 (788470 Eve) deanivy@aol.com

(Swalcliffe) Martin Bell **780129**



**The Stag's Head**  
**The Green**  
**Swalcliffe**  
**Banbury OX15 5EJ**  
**01295788660**  
**[www.the-stags-head.co.uk](http://www.the-stags-head.co.uk)**



### **Opening Times**

Monday-Friday 11.30-2.30, 05-11.00 (Tue 5.00-11.00)  
 Saturday All day, Sunday 12.00-8.00

### **Traditional Pub**

### **New Menu**

#### **Home cooked food**

**Seasonal Menu, Sunday roast, Greek dishes**

**Wednesday pie and pint, specials,**

**Friday fresh battered fish & chips**

**Greek night 16 courses last Saturday of every month**

**Selection of quality wines, Prosecco, Champagnes**

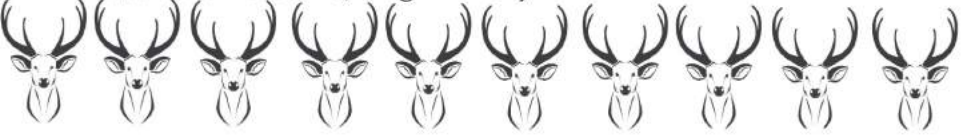
**Coffee morning last Wednesday of every month**

**Folk music every second Tuesday of every 8.30 pm**

**Beer garden**

**Bed & Breakfast**

**Walkers welcome, Dog friendly**







### **MIDNIGHT WALK SATURDAY 22 JUNE**

There's still time to join the Flower Power Midnight Walk and help make a difference for your local hospice this summer.

Embrace your inner free spirit, grab your flares, wear flowers in your hair, and get ready for a groovy time. On Saturday 22 June join hundreds of people on our Midnight Walk in Banbury, and raise funds to support people and their families living with a life-limiting illness.

Starting at Banbury Rugby Club, registration opens at 7.30pm with the walk setting off at 9.00 pm. Choose either a 10 or 6 mile circular route, finishing the walk in the dark! It's a great community event and also perfect to share with family and friends.

This year's walk starts at an earlier time so more people will see you and support your amazing efforts. As a well-loved Banbury event, we also want to make sure younger family members can join too.

There'll be plenty of activities and entertainment pre and post event. The Rugby Club bar will also be open for post-walk refreshments, so family and friends can join you to cheer you on and help celebrate your achievement.

Please sign up today at [www.khh.org.uk/midnight](http://www.khh.org.uk/midnight)

### **SKYDIVE AT HINTON AIRFIELD - 28 SEPTEMBER 2019**

Are you an adrenaline junkie? Or have you got a milestone coming up you'd like to celebrate in style? Join us on Saturday 28 September for our skydive day at Hinton Airfield. Taking part in a skydive is an amazing personal challenge. Plus it's a fantastic way to raise money to support Katharine House.

On the day you'll go through a full safety briefing before being whisked up to 13,000ft for your tandem jump over the beautiful Northamptonshire countryside.

We only have a limited number of places for this once in a lifetime experience, so secure your place today on our website at [www.khh.org.uk/skydive-day-2019](http://www.khh.org.uk/skydive-day-2019) or phone our fundraising team on 01295 816 484.

### **FESTIVAL OF GARDENS (MAY TO SEPTEMBER) (FLYER ATTACHED)**

What better way to spend a summer afternoon than in a beautiful English garden? Our annual Festival of Open gardens kicks off again in May with more than 30 gardens open in the local area there's something for everyone, and with many gardens serving teas and cakes, what more could you ask for?

For a full list of gardens, visit [www.khh.org.uk/gardens](http://www.khh.org.uk/gardens)



**HUNT BESPOKE**  
KITCHENS & INTERIORS

www.huntbespokekitchens.com

High Street, Bloxham, OX15 4LT • 01295 721111



***The Firs Garage***

**www.firs-garage.com**

Family business established 1960

Tel: 01608 737349 / 737641

Hook Norton, OX15 5DD



**New Mitsubishi vehicle range  
to suit all your motoring needs  
Call Firs sales to book a test drive**

**Extensive range of new  
and used economical  
cars, hybrids & 4x4's**

**Part exchange welcome**

**Service**

**MOT Parts**

**Bodyshop**

**Fuel Shop**



**Village Hall Accounts to  
31.01.19**
**2019****2018****Receipts**

Lettings	1983	2753
Donations	2450	707
250 Club	131	227
Fundraising Events	4361	3170
Interest	256	158
Miscellaneous	<u>123</u>	<u>55</u>
	9,304	7,071

**payments**

repairs and maintenance	1,531	1548
TV, phone and broadband	778	551
Water, electricity, oil	556	865
insurance and subscriptions	647	727
cleaning and materials	1,078	991
miscellaneous	375	193
equipment purchases	4,314	0
	(9,279)	(4,875)

**excess of receipts over payments**252196**Opening balances**

cambridge and counties	22,158
santander	3,872
petty cash	865
fete float	<u>110</u>
	27,005

surplus/(deficit)	<u>25</u>
	<u>27,030</u>

**Closing balances**

cambridge and counties	22,414
santander	3,704
petty cash	522
fete float	<u>390</u>
	<u>27,030</u>

# C.A. Berger

Painting & decorating

Carpentry repairs

Property maintenance

All interiors & exteriors

Residential & commercial

Mobile: 07875 212 315

Office Tel: 01295 738 633

Email:

claytonaberger@gmail.com

## Rainbow Village Nursery School, Bloxham

A small private nursery offering flexible sessions for children aged from 2 years  
Government funding of 15 and 30 hours  
free for all eligible children  
Rated a 'Good Provider' by Ofsted 2014  
- 2018

Please call/email for our  
'Welcome Pack'

## WELCOME TO TADMARTON

Please contact Tim Turner on  
01295 780764 if you have re-  
cently moved into  
Tadmarton or if you know some-  
one who is a new arrival.

## Swalcliffe Park Equestrian

### Calendar of Events 2019



Fri 2nd -Sun 4th Aug BRC Nat Horse Trials Championships

Sat 14th September & Sun 15th Sept Horse Events One Day Event  
(TBC)

Sunday 27th October CROWN Riding Club Hunter Trial (TBC)

## CHIMNEY SWEEP

**Jonathan Perry**

*Guild of Master Chimney Sweeps Qualified*

**Open fires, Inglenooks,  
Wood burners, Agas**

*All work certificated for  
house insurance purposes*

For a clean, friendly and  
professional service please  
contact me on:

Tel: 07557 058051

jperrychimneysweep@gmail.com

## World Dance Group in Swalcliffe

**Second  
Wednesday  
Each  
Month**



**Swalcliffe  
Village  
Hall  
7.30-9PM**

**Learn Folk Dances from around the World.**

**To beautiful music in friendly company.**

**No partner needed, or experience necessary, as  
each dance is patiently taught  
before the music starts.**

**There is no need to book, just show up with £5 in**

**Linda Morse**

**Garment and Curtain Alterations  
Curtains and Blinds made to measure**

**Collection and delivery by  
arrangement**

**Telephone 01295 720930**

**PLT  PLUMBING**

**MILCOMBE, BANBURY**

*FOR ALL YOUR DOMESTIC PLUMBING*

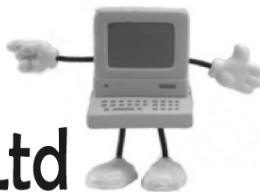
**FULLY QUALIFIED ENGINEER**

**T: 01295 368150 M: 0742 5982855**

**E-mail: info@pltplumbing.co.uk**

**Bloxham  
Computers Ltd**

*Friendly, local help with computers*



*"Always been  
fast and reliable"*

**In association with**

**Mark Clayson Computers Ltd**

*"Helpful and patient with all  
my questions, doesn't confuse  
me with techno-babble"*

**Free help choosing a new computer**

**Remove Viruses**

**Setup your Internet and Printers**

**Web design**

**Setup and fix email problems**

**Mac Support**

**Speed up your computer**

**Laptop repair**

**Broadband setup and help**

**Free advice: Tim - 0800 6129258 / 01295 812953**

**[help@bloxhamcomputers.com](mailto:help@bloxhamcomputers.com)**





**KATHARINE  
HOUSE  
HOSPICE**

**Fabulous private gardens open  
to the public this summer!**  
Raising funds for Katharine House

**4 May | 2-5pm | £5 for entry to 6 gardens | Refreshments**

South Newington - OX15 4JG with thanks to the villagers of South Newington

**2 June | 2-5pm | £2.50 | Refreshments**

Adderbury - Katharine House Hospice gardens

opening with thanks to the Simon Weatherby Garden Trust

**9 June | 2-5pm | £4 | Refreshments**

Wardington - Wardington Manor opening

with thanks to Bridget and Forbes Elworthy

**16 June | 2-6pm | £5 for 4 gardens | Refreshments**

Steeple Aston – 10 miles south of Banbury on the A4260

with thanks to the villagers and gardeners of Steeple Aston

**23 June | 1-5pm | Donation for entry | Refreshments**

Sarsden Glebe - Churchill, near Chipping Norton

with thanks to Amanda Ponsonby

**30 June | 2-6pm | £ 5 for entry to 7 gardens | Refreshments**

Horley – 3 miles north-west of Banbury

with thanks to the villagers and gardeners of Horley

**7 July | 1-6pm | £5 for 9 gardens | Refreshments**

Hornton – 6 miles north-west of Banbury

with thanks to the villagers and gardeners of Hornton

**7 July | 1-6pm | Donation on entry**

Bledington - The Old Vicarage, Main Road OX7 6UX

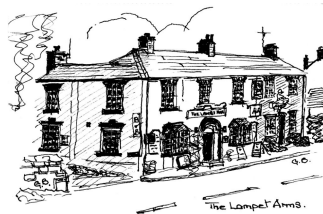
with thanks to Tony and Sue Windsor

Dogs may be permitted at some gardens.

**Other new gardens may be added to the list on our website**

# The Lampet Arms

Telephone 01295 780070



Phyllis & Des Welcome You

**Mon-Fri** 11.00 am - 2.30 pm  
5.00 pm - 11.00 pm

**Saturday:** 11.00am-11pm  
**Sunday:** 12 noon – 9pm

## Occasional Live Entertainment

Quiz - Darts - Dominoes - Aunt Sally Team

## Pie 'n Pint, plus traditional Pub Grub

Range of Cask Ales + Hooky beers, Fine Wines, Home Cooked Food

## Take-Away Meals

Give us a ring to find out what's cooking on the take-away menu.

## B&B Accommodation

High quality en-suite rooms in the old stable block.

## Sunday Roast 12 noon,

Come and try our lovely Sunday Roast, choice of five meats. Just £12.00 each, you won't be disappointed.

## Seniors' Lunch

Every Monday , 2 courses.

Set meal at £6.00 per person. Other meals at menu prices.

## Warm Welcome

Something you can be sure of in our traditional Village Pub.

## NEWS FROM SIBFORD GOWER ENDOWED PRIMARY SCHOOL



Although preparation for the national SATs has been a focus for a number of our children this half term, we have still found the time to have fun in our learning.

Our younger children are exploring the theme of 'mini-beasts' (small invertebrates such as snails, slugs, beetles, centipedes, worms, earwigs, caterpillars). The learning in school has inspired some of the children to be creative on the same theme at home, including Sholto making a 'Grand Bugapest Hotel' for the minibeasts that live in his garden!

Our beautiful grounds and natural areas provide wonderful habitats for all sorts of wildlife. The love and respect for nature that our focus on outdoor learning inspires in our children, combined with our lessons and assemblies exploring global matters, means that many of our children have a keen interest in current affairs linked to ecology and care for the environment. Some of our KS2 children have independently set up a group focusing on the key environmental issue of plastic pollution.

'Octopus Power' is intent on reducing the plastic pollution in our local environment by promoting plastic free packaging for snacks in school but also by collecting any plastic wrappings that do come into school to recycle into a plastic bench. Our own Mrs Williams is supporting with this project which fits in with the bigger picture intention Octopus Power has of trying to reduce the plastic in our seas. Their current strapline is, "Remember, a little bit of plastic can go a long way"

There were a number of stalls at the recent Sibfords Parish Meeting that linked to environmental matters. A group of our children attended this event on a more light-hearted note though. Valerie Vet, our wonderful peripatetic singing teacher, was joined by a choir of our pupils who performed to the audience in a packed Village Hall.

As always, our children were exemplary in their behaviour and attitude and they sang beautifully – what wonderful ambassadors for our school!



To find out more about our wonderful village school, including our wraparound care offer, please visit our website at <http://www.sibford-gower.oxon.sch.uk/>

CODEWORD

10	26	6	25	4		6	8	12	9	11	8	
26		25		25		8		20		9		17
21		8	16	9	21	22	25	15	20	14		2
6		19		14		8		10		15		20
		E										
10	26	9	23	18	8	6		9	17	26	8	6
1		15				8		20				10
	17	24	8	21	23		20	14	21	11	23	
25				23		17			8			5
14	9	8	15	26		3	6	8	15	8	19	8
21		23		8		21		7		2		3
22		13	9	6	21	18	21	15	20	14		26
		J										
8		25		21		8		8		21		1
	25	1	17	10	8	6		14	9	23	20	6

CODEWORDS are like crossword puzzles - but have no clues! Instead, every letter of the alphabet has been replaced by a number, the same number representing the same letter throughout the puzzle. All you have to do is decide which letter is represented by which number! To start you off, we reveal the codes for two or three letters. When you've filled in these letters throughout the puzzle, you'll have enough clues to start guessing words

A B C D E F G H I J K L M  
N O P Q R S T U V W X Y Z

1	2	3	4	5	6	7	8	9	10	11	12	13
14	15	16	17	18	19	20	21	22	23	24	25	26

Solutions can be found on Page



Annalise, 15,  
available for  
baby sitting in  
Tadmorton and  
Swalcliffe,  
£5 per hour,

“Experience of working with young  
children riding at the stables where  
I work part-time”

Annette Thomas  
Freelance Hair and  
Beauty Consultant

Why pay salon prices.  
Why not have your hair done in the  
comfort of your own home.  
Established 22years.  
01295 721845  
Mobile 07786 804851

## PR HANDYMAN SERVICES

For all those odd-jobs  
needed around the home.

Erecting shelves, curtain rails to  
building flat pack furniture.

All aspects of DIY undertaken.

No job too small  
A friendly & reliable service  
at reasonable prices.

Please call Paul on  
**01295 722490**, or  
**07796300238**



## Children's Day Nursery Epwell

- Care for children aged 2 to 5 years
- Full and part time places available
- Open Monday to Friday 9.00am – 4.00pm.
- Ofsted rating: Outstanding
- Competitive rates
- Early years grant registered.

The nursery provides excellent opportunities for children to explore and learn through play under the guidance of highly trained, experienced and caring staff.



Ring Julia on: **01295 780580** or  
e-mail [Julia@arknursery.net](mailto:Julia@arknursery.net)

## Colour Analysis by Annie Broe

I will show you which colours are best for you.

Wearing the right colours is an easy and effective way to  
enhance your appearance.

You will instantly look more radiant, younger and healthier

You will feel more confident

Colours are very powerful – use this power to your  
advantage and look fantastic!

Gift Vouchers available – **the perfect present**

For a personal colour analysis or for more details  
please call me on 01295 780637 or 07930 398151  
or email [annie4colourandstyle@gmail.com](mailto:annie4colourandstyle@gmail.com)

## Miss T Catering

Miss 'T' Catering.  
Catering for events such as:  
Anniversaries, Weddings,  
Christenings,  
Birthday parties,  
Funerals  
And private dinner parties.

~.~.~

Also available  
Cutlery and Crockery Hire.

Contact Victoria Taylor on:

Mob: 07841 910037  
Home: 01295 780206

# Tadmarton Film Club:

Next month will see the 1st anniversary of The Tadmarton Film Club.

If you have not signed up yet , Why NOT ?

The annual membership is £15 for 12 Films

The Venue: our local village hall.

You have the option to be a Pro rata Or PAYG member for £1.25 per film.

New chairs were purchased to help with the lengthy times in your seat. And the cinema equipment is fabulous,

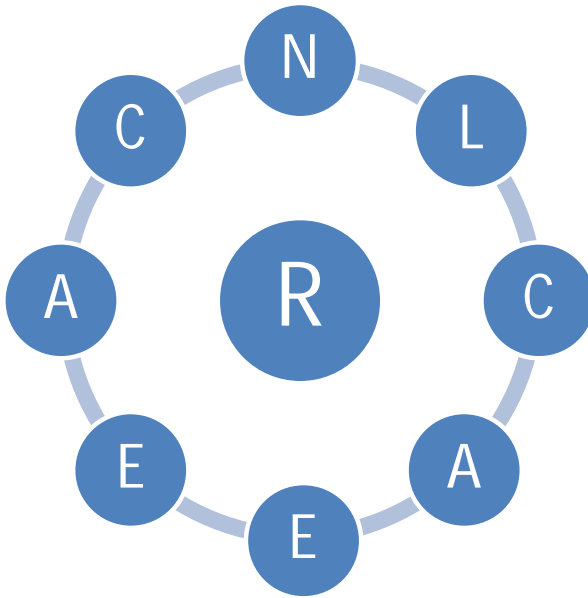
There are sweets , nibbles and drinks on the night and of course the chance to buy a raffle ticket to win a variety of prices.

The lampet is over the road for your interval drinks...

What's not to like ?

Should you be unable to make the Saturday evening then the film is played again as a matinee the following Wednesday.





Find as many words of three or more letters as you can in the wheel.

Words must only use letters in the wheel.

Every word must use the central letter.

Plurals or proper nouns are not allowed.

There is always at least one word that uses all the letters in the wheel.

## 250 Club May 2019

**Christine Morby. £15.00**

**Debbie Koch. £10.00**

**Pat Salethorn. £5.00**

**Peter Jackson. £5.00**





# Bone-Dry™

Up to 20% Volume Discount  
with this advert!

## Dry Organic Carpet Cleaning

Carpets can be used *immediately*  
after cleaning !

Our **POWERFUL** system-

- ♦ Cleans deep down
- ♦ Safe for babies, children & pets
- ♦ Is completely dry
- ♦ Totally organic - reduces allergens
- ♦ Safe for allergy sufferers
- ♦ No shrinkage or seam splitting

**ZERO**  
Drying  
Time

*We also clean -*

*Upholstery  
Natural Carpets -  
(Sisal, Seagrass)  
Oriental Rugs  
Leather furniture*

Local Office 01295 780909

e: [banbury@bone-dry.co.uk](mailto:banbury@bone-dry.co.uk)  
w: [www.bone-dry.co.uk](http://www.bone-dry.co.uk)



Oil & Gas Boiler servicing, repair and replacements.  
Unvented Hot Water cylinder installation and maintenance.  
All other aspects of plumbing and heating.

Contact David / James  
01295 780668 / 07760977058  
[dbutlerheating@gmail.com](mailto:dbutlerheating@gmail.com)



# Shutford Festival

## 2019

**ALL DAY BAR & BBQ • TEA, COFFEE & CAKES**

**LIVE BANDS FROM 5.00 PM:**

**COLD BLUE DAZE**

**UNDER THE COVERS**

**THE MEANIES**

**Dog Show • Pottery Workshops • Beauty, Makeup & Nails**

**Encore Dance Group • Fairground Rides • Banbury X Archers**

**Deddington Rifle Club • Radio Horton • Rainforest Creatures**

**Shipston Bee Association • Classic Car Rally • Juggling John**

**Mini Back Neck & Shoulder Massage, Aromatherapy & Crystals**

**Plant & Local Produce Stall • Wine & Water**

**Tombola • Books, CDs & DVDs • Kids Fun Stalls**

**Saturday 22nd June**

**1.00pm - 10.30pm**

**Manor House Park**

**Tickets available on the day • Children under 12 FREE**

**£2 Entrance for the afternoon • £8 from 4.00pm**

**SPONSORED BY**



Visit [www.shutfordvillage.com](http://www.shutfordvillage.com) or find us on facebook /shutfordfestival  
 Proceeds will be split between Shutford Village Hall & St Martin's Church, Shutford

Fitness classes/PT  
Massage Therapy



**DOVECOTE**

FITNESS • MASSAGE • WELLNESS

Swalcliffe Lea oxon  
[www.dovecotefitness.com](http://www.dovecotefitness.com)  
07802537100

## Holiday Villa For Rent in Prcanj, Kotor Bay MONTENEGRO



Few Minutes Walk From Beach and shop.  
Wonderful views over Kotor Bay

3 bedrooms, sleeps 6, wi-fi, self-catering.  
All bedding supplied. Easyjet flies in to  
nearby Tivat (20 minutes drive).

Pictures and info at  
[www.ownersdirect.co.uk/8044037](http://www.ownersdirect.co.uk/8044037)

For more details and to book contact  
Martin Key tel: 01295 788206 or  
email: [mkey@magicword.com](mailto:mkey@magicword.com)



**Kooky Tours**

travel. tours. more.

KookyTours has been providing travel and tour packages of the UK to foreign and domestic visitors since 2010. We've recently expanded to include a private hire taxi service which we are delighted to offer locally

airport transfers • long haul journeys • days/nights out •  
school runs • festivals • events • shopping trips • courier  
service and much more

up to eight passengers with luggage • credit cards accepted • insured • licensed  
CRB checked • 24hrs

contact Lee McCallum on 07779400421 or [info@kookytours.com](mailto:info@kookytours.com)  
[www.kookycotswoldtours.com](http://www.kookycotswoldtours.com)

## SWALCLIFFE & TADMARTON HORTICULTURAL SOCIETY

The Plant Sale on 11th May was a huge success despite the weather and we would like to say a very big thank you to everyone who donated plants and cakes and to all who helped on the day - we do really appreciate it.

A big thank you also to those of you who supported us by visiting during the afternoon. Happy Growing!



### **A word of warning from Oxfordshire county council.**

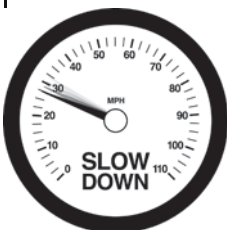
Do you know that 95% of collisions are due to human error? Distraction, speeding, not wearing a seatbelt and driving under the influence of drink or drugs are the big fatal four on our county's roads.

Could you?

- put your phone in your glove compartment or set your phone to do not disturb before you start your journey
  - adjust your speed and make sure you have time to react to the unexpected
  - make sure everyone is wearing their seatbelt before you set off
    - get a taxi, the bus or be the designated driver on a night out
- make sure you're safe to drive the morning after, you could still be over the drink drive limit, even if you feel fine

Oxfordshire County Council Fire and Rescue Service have put together top tips to help you avoid the fatal four, and have created an handy 'don't get caught out the morning after' guide.

Want to know more go to <http://www.365alive.co.uk>





**Iron and Wood Ltd**  
the wood burning stove centre



Visit our Showroom at  
Beaumont Road, Banbury,  
Oxfordshire, OX16 1RH (opposite Jewson)  
T: 01295 253936  
E: [banbury@ironandwood.co.uk](mailto:banbury@ironandwood.co.uk)  
[www.ironandwood.co.uk](http://www.ironandwood.co.uk)



## **MULLINS PAINTING & DECORATING CONTRACTORS**

**Domestic & Commercial  
Interior & Exterior  
Fully Insured**

**Competitive Pricing  
References Available .  
Free Quotations**

**We also provide general  
maintenance to  
your home or office.**

**TEL: 07815 288909**

**01295 264 117**

WEBSITE: [mullinsdecor.co.uk](http://mullinsdecor.co.uk)

EMAIL: [lee@mullinsdecor.co.uk](mailto:lee@mullinsdecor.co.uk)

### **Holiday Cottage in Cornwall**

On the beautiful north coast in Poldark country, character cottage set in a large south-facing enclosed garden, is available for holiday lets.

**Scrumbles Hollow sleeps six in three double bedrooms, one with ensuite shower room, plus a family bathroom. Full central heating.**

The spacious cottage has an open fire place in a cosy sitting room, while the dining room boasts a log burner. Fully equipped kitchen and separate utility room for sorting out sportswear after a day on the beach or walking the breath-taking countryside.

**Lots of good local pubs and restaurants, shops and galleries. Excellent public transport connections, including Newquay airport (half an hour by car).**

For more information, please contact Linda on 01295 780 242 or



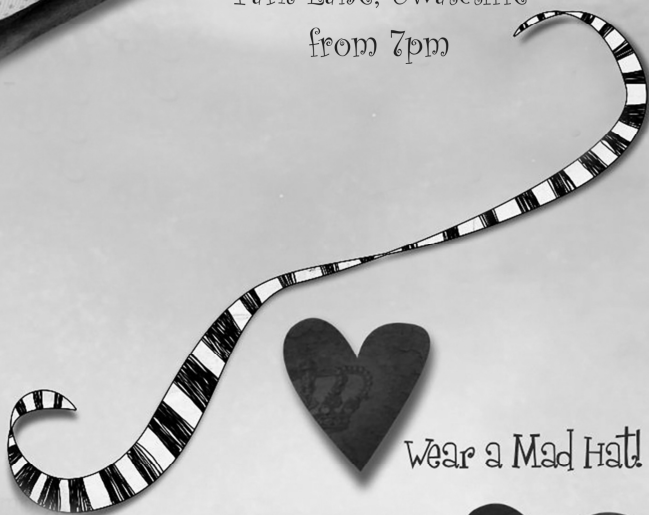
You are invited to join a

# Mad Hatters Supper Party

"Hatters @ Tatters"



on Saturday 27th July 2019  
at Abingdon House,  
Park Lane, Swalcliffe  
from 7pm



Wear a Mad Hat!



Tickets £15 each

- Delicious 3 course supper
- Licensed bar
- Live music from Pete Watkins
- Prize for the maddest hat!



Advance Tickets available online  
on the village website:  
[www.swalcliffe.org](http://www.swalcliffe.org) or from Gay Harris (788427)  
or Virginia Merritt (788098)

Fancy dress optional, but encouraged!  
All proceeds will go towards the upkeep of Swalcliffe Church

*more than just a pick me up ...  
we do other things as well, you know!*

Your one-stop shop for all cars and commercials.  
Try us, you'll be glad you did

- **Servicing and Repairs**
- **MOT's** (Class 4 and 7)
- **Engine Diagnostics**
- **Tyres and Exhausts**
- **24hr Roadside Assistance**



## ISIS RESCUE (Banbury)

**T.** 01295 711555

**F.** 01295 714133

**e.** [banbury@isisrescue.co.uk](mailto:banbury@isisrescue.co.uk)

Home Farm, Warkworth Road,  
Warkworth, nr Banbury, Oxon  
OX17 2JH

### FAIRFAX INTERIORS

*The Old Bakery, High Street, Lower Brailes,  
nr Banbury, Oxfordshire OX15 5HW  
Tel: 01608 685301*

*e-mail: [info@fairfaxinteriors.com](mailto:info@fairfaxinteriors.com)*

*website: [www.fairfaxinteriors.com](http://www.fairfaxinteriors.com)*

For over 20 years **Fairfax Interiors**, under the guidance of owner Caroline Elliott, has helped people throughout the United Kingdom to improve their homes. Fairfax has one of the largest collections of designer fabrics, wallpapers and trimmings in the south of England. This coupled with a passion for design and an unerring ability to fulfil clients needs make this a unique Interiors Design Practice.

Soft furnishings and curtains are made in house by an exceptionally skilled team of seamstresses; fitting and upholstery are carried out to exacting standards ensuring total customer satisfaction. Fairfax provides project management for full refurbishment, as well as dressing houses for sale.

Caroline likes to support local and emerging designers together with more established names such as Zoffany, Designers Guild, Andrew Martin and Pierre Frey to name just some from the vast selection available to view in the friendly and easily accessible showroom and design studio.



# CREAM TEA



AT

4, OLD GLEBE, UPPER TADMARTON.

Sunday 28th July – 2.30pm onwards.

Entry £3 (under 16's £1) – includes cream tea.

Plant and cake stalls.

+Raffle.

All proceeds to the proposed new Kitchen Area in St.  
Nicholas church, Tadmarton.

Everyone most welcome.



## **Environmental Positive Impact required:**

You will have undoubtedly heard about the protests throughout the UK regarding environment, pollution and animal treatment.

Well there are many ways for you to make a positive impact. You don't have to be fantastic in every way, Every little helps. But maybe you can consider one of the following options:

Make a hedgehog house, below is a easy style picture.  
All it needs is a flat felt roof and hey presto.

Create your own bug hotel.

Reduce as well as recycle.

Think before you eat, Do you need it, Is it full of good nutrients? Is it in season, reduce food miles, go veggie for a day, Recycle any food waste

Can you lift share or catch a bus.

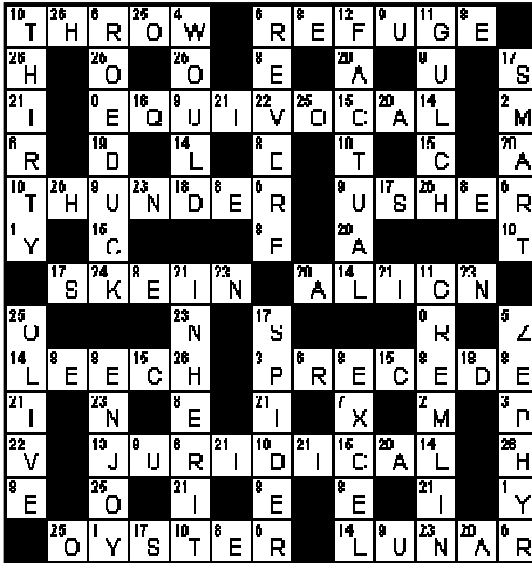
Do you look after the amount of electricity/ gas you use.

Have you got any good ideas you would like to share in your local magazine?



<b>Emergency</b> 999	<b>Banbury Police</b> Non emergency 101 <a href="http://www.thamesvalley.police.uk">www.thamesvalley.police.uk</a>	<b>Oxford Animal sanctuary</b> 01865 890239 <a href="http://www.helpwildlife.co.uk">www.helpwildlife.co.uk</a>
<b>NHS England</b> 111 <a href="http://www.nhs.uk">www.nhs.uk</a>	<b>Crime Stoppers</b> 0800 555 111 <a href="http://www.crimestoppers-uk.org">www.crimestoppers-uk.org</a>	<b>RSPB</b> 01767 680551
<b>Hornton Hospital</b> <a href="tel:03003047777">0300 304 7777</a>	<b>Missing people</b> 116 000 <a href="mailto:116000@missingpeople.org.uk">116000@missingpeople.org.uk</a>	<b>RSPCA</b> 0300 1234 999
<b>Bloxham Surgery</b> <a href="tel:01295722788">01295 722788</a>	<b>Silverline</b> 0800 4 70 80 90	<b>Wildlife advice</b> 01767 693690
<b>Sibford Surgery</b> 01295 780213	<b>NSPCC</b> 0808 8005000	<b>Dog Warden</b> 01295 227007
<b>Bloxham Dental</b> <a href="tel:01295721030">01295 721030</a> <a href="mailto:blox.dent@nhs.net">blox.dent@nhs.net</a>	<b>Childline</b> 0800 1111	<b>Out of hours Stray Dogs</b> 01295 221531
<b>Mobility Aids Red cross</b> 01295 258331	<b>Samaritans</b> <b>116123</b>	<b>Local Vets</b> Hook Norton 01608 730501 Hawthorne 01295 259446 West bar 01295 262332
<b>Swalcliffe Village Website</b> <a href="http://www.swalcliffevillage.co.uk">www.swalcliffevillage.co.uk</a>	<b>Government Services</b> <a href="http://www.gov.uk">www.gov.uk</a>	<a href="tel:01608642547">Chipping N 01608 642547</a>
<b>Tadmarton Village Website</b> <a href="http://www.tadmartonvillage.co.uk">www.tadmartonvillage.co.uk</a>	<b>Cherwell council</b> Gen Enq: 01295 227001 Environment: 01295 227007	<b>Red wings Horse Sanctuary</b> 0870 040 0033
<b>Highways</b> 0300 123 5000	<b>Western Power</b> Faults 0800 6783105 General Enq: 0800 0963080	<b>Community Fuel Info</b> 01295 780451
<b>Thames water</b> Leak line 0800 714614 Blockages 0800 316 9800	<b>Johnsons bus service</b> 01564 797 070	<b>BT Landline Faults</b> 0800 111 4567
<b>stagecoach</b> 01865 77 22 50		<b>National Rail</b> 03457 48 49 50

## CODEWORD SOLUTION



Letter Wheel solution:  
Clearance

Remember to put in your  
request for puzzles you  
like (or even send me  
one)

Riddles are also very  
welcome.

# COUNTY Oil Tank SOLUTIONS

— The Oil and Water Tank Specialist —

- Domestic Oil Tank Installations
- Safe Disposals and Tank Servicing
- AGA and Boiler Servicing
- Fuel Depots
- NEW Smart Gauges that link to your phone  
always know what's in your oil tank wherever you are

24 Hour  
Emergency Call Out  
for Failed or Leaking  
Oil Tanks and Pipework



07799 643455

james@countyoiltanksolutions.com



10 YEARS IN THE BUSINESS

*Is this the  
Year to have  
Your Tank  
serviced or  
changed?*



# **DIRECTORY OF LOCAL SERVICES**

## **Also Open to Non Advertisers £10.00 per annum.**

### **ACCOUNTANT**

Christopher Dean & Co. Tax advice VAT, Year End. 01295 788104

### **AGRICULTURAL SERVICES**

David Lovesey. Rural Services, Lawns to Fields 01295 788298

Paddockwise. Grass Maintenance, Spraying. 01295 780135

### **BEAUTY AND WELLBEING**

Annette Thomas. Hair & Beauty in your own home. 01295 721845

Serenity at Sibford. All beauty treatments. 01295 788463

The Croft—massage, skincare, manicure, waxing etc 07841 657764

Choosing the best colour for you with Annie Broe 01295 780637

International Dance with Tracy Lean 01295 780710

Pilates at Sibford with Madeleine 01295 780279

The Banbury Therapy Centre. Free initial assessment available. 01295 231320

### **CARPET CLEANING**

Bone-Dry. Organic carpet cleaning. 01295 780909

### **CARPENTER**

N.D.Smith. Quality Joinery work. 01295 780970

### **CAR SALES**

Firs Garage Sales 01608 737349

### **CATERING**

Gill Judd. Hire of China & return dirty. 01295 780243

Miss T Catering. Catering Parties, Celebrations. 01295 780206

### **CHILD CARE**

The Ark. Full day care for children. 01295 780580

Rainbow Village nursery 01295-722266

Babysitter Annalise Kingsford 01295-780716

### **CHIMNEY SWEEP**

Your local qualified chimney sweep—Jonathan Perry 07557 058051

### **COMPUTER SERVICES**

Bloxham Computers Ltd. Repairs, Problem solving, Website Design 0800 6129258

### **ELECTRICAL**

Neil Megson. All electrical work. 01295 263665

**GARAGE SERVICES**

Isis Rescue (Banbury). Servicing, 24hr. Roadside assistance.	01295
711555 The Firs Garage. New & Used cars, servicing, Parts.	01608
737349	

**GARDEN SERVICES**

Quarry Nurseries vegetables, border and baskets	07903 655267
Trinity Oak. Tree felling, landscape gardening, fencing	01295 730650

**GARDEN MACHINERY**

Bruce Hopkins. Groundcare Machinery.	01295 680711
--------------------------------------	--------------

**GARMENT ALTERATIONS AND CURTAINS MADE**

Linda Morse—garments, curtains and blinds made	01295 720930
--	--------------

**HOLIDAY LETS**

Linda Lane—Cottage in Cornwall	01295 780242
Jane Fitzpatrick—Cottage in lower Tadmarton	01295 780451

**INTERIOR DESIGNERS**

Fairfax Interiors. Re-design your home.	01608 685301
---	--------------

**KITCHENS**

Hunt Bespoke Kitchens & Interiors. Kitchen Makers Joiners.	01295 721111
--	--------------

**PAINTER & DECORATOR**

C.A. Berger. Interior, Exterior Painting & Carpentry.	01295 738633
Mullins. Interior & Exterior.	01295 264117
Noahs Ark. Bespoke murals, Exterior & Interior decorating.	01295 811026
PR Handyman services help with your home	01295 722490

**OVEN CLEANING**

Cookerburra Oven Cleaning Services – Banbury	01295 277789
--	--------------

**PLUMBING & HEATING**

David Butler plumbing and heating	01295 780668
PLT Plumbing all domestic plumbing	01295 368150
County oil Tank solutions	07799 643455

**PUBLIC HOUSES**

The Lampet Arms. Accommodation, ales, food	01295 780070
The Stags Head Home cooked food and good ales	01295 788660

**SCHOOLS**

Sibford School. Independent co-educational	01295 781203
Sibford Gower Endowed Primary	01295 780270
Swalcliffe Park School for Boys with Autism	01295 780302

**STOVES**

# The 3A Bus Timetable From 02.09.2018

Stratford upon Avon - Shipston on Stour - Banbury

## MONDAY TO SATURDAYS

Service Number	3A	3A	3A	3A	3A
Day Code	NS				SSH
Notes					
<b>Stratford upon Avon, Wood Street</b>	<b>0615</b>	<b>0900</b>	--	--	<b>1605</b>
Stratford upon Avon, Bridge Street	0617	0902	--	--	1607
Preston on Stour, Church	0623	0908	--	--	1613
Alderminster, Church	0628	--	--	--	--
Ilmington, Red Lion	--	0920	1140	--	1625
Armscote, Fuzzy Duck	--	0926	--	--	--
Halford, Bridge Inn	--	0930	--	--	--
Shipston on Stour, Tilemans Lane	0637	0937	1147	--	1632
<b>Shipston on Stour, Pettiphers Garage</b>	<b>0640</b>	<b>0940</b>	<b>1150</b>	--	<b>1635</b>
					
<b>Shipston on Stour, Pettiphers Garage</b>	<b>0640</b>	<b>0940</b>	<b>1150</b>	<b>1340</b>	<b>1635</b>
Lower Brailles, The Park	0650	0950	1200	1350	1645
Sibford Ferris School	0702	1002	1212	1402	1657
Lower Tadmarton	0712	1012	1222	1412	1707
<b>Banbury, Bus Station</b>	<b>0725</b>	<b>1025</b>	<b>1235</b>	<b>1425</b>	<b>1720</b>

## MONDAY TO SATURDAYS

Service Number	3A	3A	3A	3A	3A	3A
Day Code	Hol			SSH	Sch	
Notes						
<b>Banbury, Bus Station</b>	<b>0730</b>	<b>1030</b>	<b>1240</b>	<b>1430</b>	<b>1430</b>	<b>1730</b>
Lower Tadmarton	0743	1043	1253	1443	1443	1743
Sibford Ferris, School	--	1053	1303	1453	1453	1753
Lower Brailles, The Park	0756	1106	1316	1506	1506	1806
<b>Shipston on Stour, Pettiphers Garage</b>	<b>0806</b>	<b>1116</b>	<b>1326</b>	<b>1516</b>	<b>1516</b>	<b>1816</b>
						
<b>Shipston on Stour, Pettiphers Garage</b>	<b>0806</b>	<b>1116</b>	--	<b>1516</b>	<b>1516</b>	<b>1816</b>
Shipston on Stour, Tilemans Lane	0809	1119	--	1519	1519	1819
Halford, Bridge Inn	--	1126	--	--	--	--
Armscote, Fuzzy Duck	--	1130	--	--	--	--
Ilmington, Red Lion	0816	1136	--	1526	1531	--
Alderminster, Church	--	--	--	--	LQ	1828
Preston on Stour, Church	0828	--	--	1538	--	1833
Stratford upon Avon, Bridge Street	0836	--	--	1546	1600	1841
<b>Stratford upon Avon, Wood Street</b>	<b>0838</b>	--	--	<b>1548</b>	<b>1602</b>	<b>1845</b>

### Notes:

Sch - Bus operates on Schooldays only

SSH - Bus operates on Saturdays and Monday to Friday during School Holidays only

Hol - Operates Monday to Friday during School Holidays Only

NS - Operates Monday to Fridays only

LQ - Operates via Shipston High School (1523), Lower Quinton (1540) & Clifford Chambers (1553)



To comply with Driver Hour regulations, these services connect at Shipston on Stour. This connection is guaranteed, through fares are available & passengers can remain on the vehicles which operate through.



## Book the date-its Taddy Fete!!

Saturday 7<sup>th</sup> September, is the date for this year's fete, and there's plenty to look forward to.

It was suggested that the traditional 'Bit Of A Do' be brought back again, and this is the reason the fete is moving to a Saturday. So that 'The Do' will follow on, from what we hope will be a fun and busy day at the fete.

This year's fete will include all the usual stalls, with everything from plants and crafts to homemade cakes, book stalls, tombola, family games and children's activities. Everything for the family to join in and enjoy. Entry to the fete remains free.

And this year we hope to start the day off with a car boot and classic car show. A single Car Boot stall will be £3. Having a wander around the classic cars will be free.

The essence of a successful fete is not just down to the weather, but to all the volunteers who make it happen, not just on the day, but in the weeks and months ahead of the day. So if you would like to be a part of this community event, then don't be shy, come and join the team.

'The Do' will be a ticket only event in the evening, and we are delighted to have secured the wonderful Swingettes as our feature live act. (See Page 47) There will also be a support act, and some DJ music to finish off the evening. There will be food included as part of the ticket price, and a pay bar will be available.

Tickets will be limited, as this is bound to be a popular event, so you are advised to grab yours as soon as possible (£15 each available from any fete organiser).

'The Do' will be under cover, (hence the limited ticket availability), so we hope to have outwitted any inclement weather.

If anyone wishes to have a stall at the fete, please contact any fete organiser.

We look forward very much to seeing everyone on the 7<sup>th</sup> September.

Fete Organisers:

Helen Yeomans 01295 - 780426  
Di Yardley 01295 - 780481  
Kevin Tomblin 01295 - 788342  
Jane Fitzpatrick 01295 - 780451



The Swingettes offer a wide variety of vocal entertainment .

Their repertoire includes everything from vintage songs to jazz and modern pop with a classic twist.

With stunning vintage costumes, they're sure to delight you with their impeccable voices.

For a taste of what they do you can check them out on Facebook: <https://www.facebook.com/TheSwingettes/>

For Tickets :

Helen Yeomans 01295 - 780426

Di Yardley 01295 - 780481

## LOCAL VILLAGE EVENTS

**T= Tadmarton   S =Swalcliffe   V.H.= Village Hall**

8 June	Coffee Morning	TVH	P 20
22 June	Village Clay Shoot		P 18
22 June	KHH Midnight Walk		P 20
22 June	Shutford Fest		P 33
29 June	Taddy Film Club	TVH	P 30
3 July	Film Club Matinee	TVH	P 30
13 July	Coffee Morning	TVH	P 8
27 July	Mad hatter Party		P 37
27 July	Taddy Film Club	TVH	P 30
28 July	Summer Cream Tea	The Glebe	P 39
31 July	Film Club Matinee	TVH	P 30
7 Sept	Village Fete		P 46
14 Sept	Coffee Morning	TVH	P 8
28 Sept	KHH Skydive		P 20
9 Nov	Pudding Club	TVH	P 14

## PADDOCK & ORCHARD GRASS MAINTENANCE AT REASONABLE PRICES

Types of work undertaken:

Re-seeding, mowing/topping, harrowing, rolling,  
fertiliser spreading and spraying.

Contact Martin Cherry ,

## PADDOCKWISE

**Tel: 01608 737415**

**Mobile: 07785 916252**

**Email: martincherry07@btconnect.com**